

# Oracle Prime Projects Portfolio Management

## ORACLE® Construction and Engineering

### KEY FEATURES

- Secure, scalable and configurable cloud-based solution
- Rich, query-based portfolio filtering capability
- Portfolio-level prioritization capability with investor maps (bubble charts) to visually compare projects
- Strategic alignment hierarchy to link projects with business drivers and monitor progress toward goals
- Role-based portfolio-level capacity planning
- Integrated project portfolio and capital plan management
- Multiple funding sources allocation to projects via a portfolio
- “What if” scenario planning, optimization and water-lining capability
- Real-time efficient frontier options to visualize portfolio options
- KPI monitoring via customizable measures formulae allow for ongoing monitoring of portfolio performance
- Configurable workflow and approvals with notifications
- Flexible dashboards, performance scorecards and reporting solutions
- Collaboration and social networking capabilities

Oracle Prime Projects Cloud Service provides a portfolio-based view of project information, including the proposed project pipeline, estimated budgets and capital spend requirements. Portfolio managers can evaluate scenarios and arrive at an optimal plan to allocate financial budgets and other resources across multiple projects that are in line with strategic goals. Users can monitor portfolio health, track performance and balance portfolios via alignment with corporate strategic goals.

### Today's Key Solution Advantages

Oracle Prime Projects enables portfolio planners, executives, stakeholders, and project managers to propose, inventory, prioritize, and select projects in a collaborative fashion and take corrective action when necessary. The solution provides comprehensive, long-range tools for capital planning and budget approval across project portfolios. Configurable performance scorecards monitor the lifecycle of portfolios based on key measures.

### Portfolio Planning

- Oracle Prime Projects helps portfolio managers determine which projects to undertake during a planning cycle.
- In the planning phase, projects can be submitted either as project proposals and routed through configured workflows or created as active projects.
- Organization-wide KPIs and prioritization metrics can also be identified and created during the planning phase.
- Depending on your budget planning needs, organizations can set up capital plans for portfolios using configurable time horizons.
- Project stakeholders can estimate project costs and define multi-year capital budgets for their projects as part of this process.

## KEY BENEFITS

- Consistently evaluate projects based on your business criteria
- Edit projects rating across your portfolio
- Use an investor map (bubble chart) to graphically view the scores of projects in the portfolio
- Align proposed and active projects to strategies or other business drivers
- Create role-based capacity plans for your project portfolio based on project resource demands
- Create multi-year, long-range capital plans with annual budget planning and rolling forecast support
- Prioritize investments to maximize return
- Model scenarios to evaluate project portfolio spending. Scenario Comparison allows users to easily compare key financial information and KPIs side-by-side for each scenario.
- Gain faster agreement on project budgets during planning via inbuilt collaboration in real time
- Monitor, report and analyze project portfolio activity, status and customer success metrics
- Share performance improvement results with key business stakeholders using online performance scorecards and configurable dashboard widgets
- Complete more, higher-value projects sooner
- Monitor your portfolios on via mobile device wherever you are

Projects & Proposals	Evaluation Score	Strategic Fit	Market Penetration	Capabilities	Economic Impact	Geographic Impact	Technical Feasibility	Resource Feasibility	Resource - People
Cloud Accelerator	53.55%	Low	Medium	Low	High	Medium	Very Low	Low	Medium
Strategic Initiatives	60.21%	Medium	Medium	High	High	Very High	Very Low	Very High	Low
Primavera Implementation	54.80%	Low	Medium	High	Low	Medium	Low	Medium	High
IT Infra Development	67.78%	Very High	Very Low	Low	Very High	High	Very Low	Very High	Low
Process Improvement	56.53%	Medium	Low	Very High	Medium	High	Very Low	Medium	Low
City Center Office Building Addition	62.04%	Low	Medium	Low	Low	High	Medium	Medium	Low
Wallingford Corporate Park	51.85%	Very Low	Medium	Low	Medium	Low	Low	Medium	Very High
Harbour Pointe Assisted Living Care	49.55%	Low	Medium	Low	Low	Medium	High	Low	Medium
Juniper Nursing Home	67.33%	High	Low	Low	High	Medium	Very Low	Low	Very High
Drifwood - Refurb Outage	43.66%	Very Low	Low	Low	Medium	Low	Medium	Low	Medium
Rad River - Refurb Outage	65.64%	High	Low	Medium	High	High	Very Low	Low	Low
Buckton - TN - Office Maintenance	57.34%	Low	Low	Medium	Low	Medium	Medium	High	Medium
Cloud Success	56.35%	Medium	Medium	High	Medium	Low	High	High	Low
Milton Order Proposal	62.49%	High	Low	Very Low	Medium	High	Medium	Low	Very High
Primavera Consulting	56.62%	Medium	Low	High	Very Low	Low	Low	Low	Low
Sales Consulting	56.45%	Low	Very High	Medium	High	Medium	Very Low	High	High
Phone Consulting	58.80%	Medium	High	Very Low	Medium	High	High	Very High	Low
Cloud Consulting	63.41%	High	Low	Medium	Low	Medium	High	Low	High
Implementation Consulting	44.21%	Low	Very Low	Low	Very Low	High	Low	Very Low	Very High

Figure 1. Top-down portfolio prioritization for project ranking and selection

## Portfolio Prioritization and Project Selection

- Oracle Prime Projects displays projects and proposed projects on interactive, editable listing pages with full grouping and sorting capability, enabling the portfolio manager to slice and dice project data for evaluation purposes.
- Simple measures can assist with maximizing project benefits and minimizing costs, risks and effort across the portfolio.
- Extensive “what if” scenario modeling tools, including sophisticated water-lining and linear programming options, can be used to evaluate and arrive at an optimum portfolio mix for capital plans.
- The preferred capital plan can be saved and approved as part of the capital planning cycle.

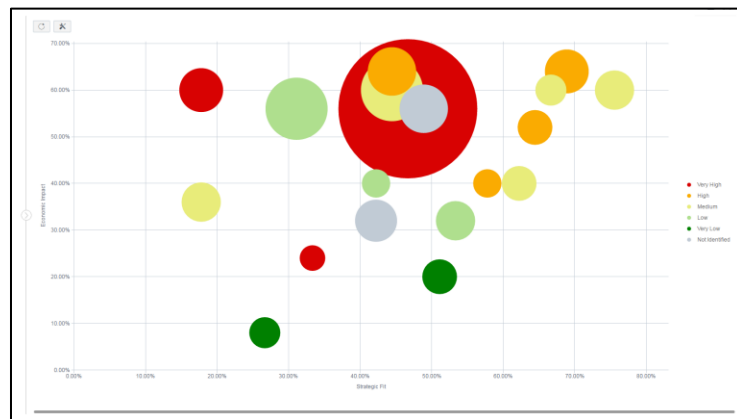


Figure 2. Investor map capability for project portfolio evaluation

## ORACLE PRIME PROJECTS

Oracle Prime Projects is an integrated, cloud-based solution built on Oracle Red Stack technology. The product platform is mobile ready, offers embedded analytics on the cloud and has built-in workflows for long-range capital planning.

## INTEGRATION

Oracle Prime Projects is seamlessly integrated with Primavera P6 Enterprise Project Portfolio Management using Primavera Gateway.

## MOBILE

Oracle Prime Projects has an iOS app for iPhone and iPad that lets you monitor your portfolios and view department-level dashboards wherever you are.

## RELATED PRODUCTS

Additional value can be realized from your Oracle investments with:

- Primavera P6 EPPM

## Project Execution

- Oracle Prime Projects allows customers to capture, baseline and report on portfolio level measures or KPIs throughout the project lifecycle.
- Typical data that's summarized for use in portfolio monitoring during project execution includes schedule information, project costs, and resource data.
- Integration with Oracle's Primavera P6 Enterprise Project Portfolio Management (EPPM) can be enabled to manage detailed project scheduling and cost breakdowns.

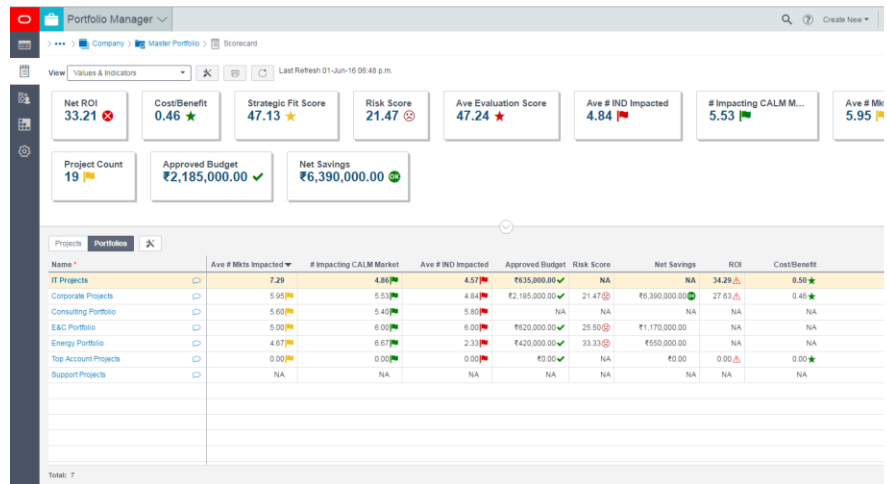


Figure 3. Build scorecards to track and monitor business-specific measures

## Portfolio Monitoring

- Rich portfolio filtering and KPI monitoring via customizable measures formulae allow for ongoing monitoring of portfolio performance.
- Project portfolios can be monitored by displaying portfolio measures on flexible performance scorecards, either at the project level or as a summary across similar portfolios within a workspace.
- Budget analysis views such as capital planning scorecards and spending plans allow planners and stakeholders to review spending over time to identify budgets variances and make the necessary adjustments to the plans.

**ORACLE®**

## CONTACT US

For more information call 1-800-423-0245 (US) or +44-0-870-8-768711 (UK) to speak to an Oracle represe

## CONNECT WITH US



[blogs.oracle.com/construction-engineering](https://blogs.oracle.com/construction-engineering)



[facebook.com/oracleprimavera](https://facebook.com/oracleprimavera)



[twitter.com/oracleeppm](https://twitter.com/oracleeppm)



[oracle.com/primavera](https://oracle.com/primavera)

## Integrated Cloud Applications & Platform Services

Copyright © 2017, Oracle and/or its affiliates. All rights reserved. This document is provided for information purposes only, and the contents hereof are subject to change without notice. This document is not warranted to be error-free, nor subject to any other warranties or conditions, whether expressed orally or implied in law, including implied warranties and conditions of merchantability or fitness for a particular purpose. We specifically disclaim any liability with respect to this document, and no contractual obligations are formed either directly or indirectly by this document. This document may not be reproduced or transmitted in any form or by any means, electronic or mechanical, for any purpose, without our prior written permission.

Oracle and Java are registered trademarks of Oracle and/or its affiliates. Other names may be trademarks of their respective owners.

Intel and Intel Xeon are trademarks or registered trademarks of Intel Corporation. All SPARC trademarks are used under license and are trademarks or registered trademarks of SPARC International, Inc. AMD, Opteron, the AMD logo, and the AMD Opteron logo are trademarks or registered trademarks of Advanced Micro Devices. UNIX is a registered trademark of The Open Group. 1117



Oracle is committed to developing practices and products that help protect the environment